

FOR LEASE

2210 Main building - Holy Cross Center

2210 2nd Street SW



For more information, please contact :

DALE COUPRIE

Senior Leasing Agent

Cell : (403) 852 4448 Fax : (403) 228 4439

dcouprie@bowriverleasing.com

BOW RIVER PROPERTY MANAGEMENT AND LEASING

B250 2210, 2nd Street, SW
Calgary, AB. T2S 3C3

<http://bowriverleasing.com>

Floor 4

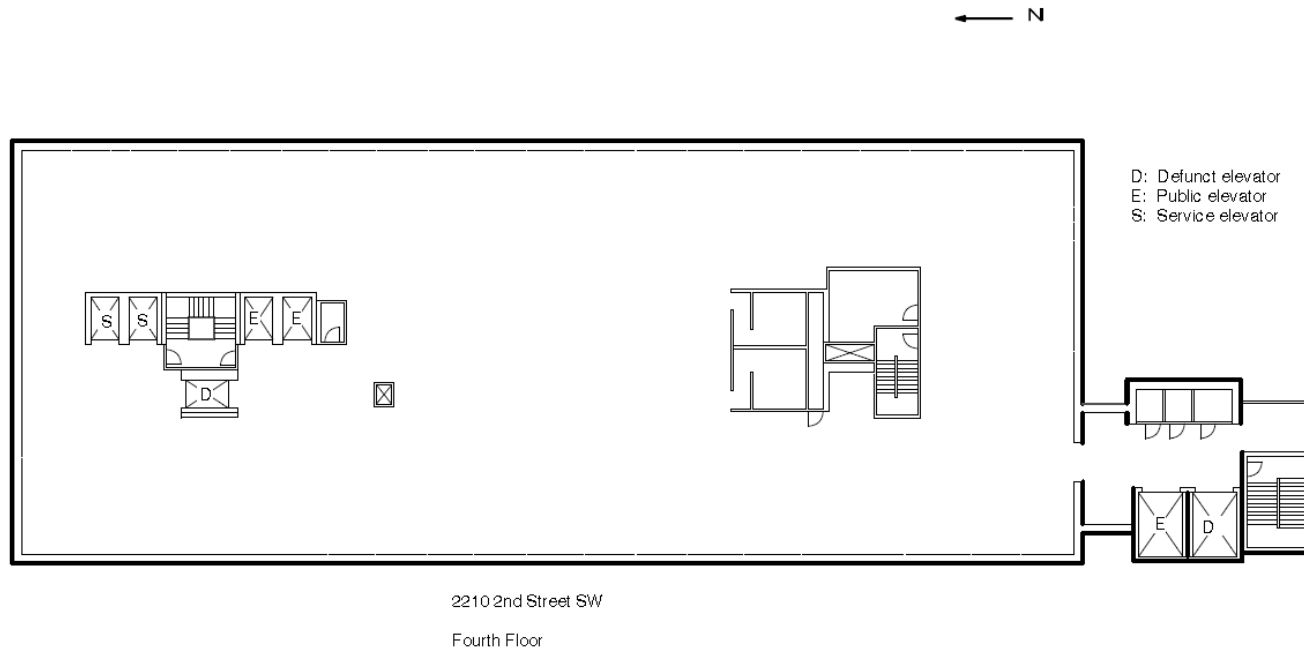
2210 Main building - Holy Cross Center
2210 2nd Street SW

23,178 SF

HIGHLIGHTS

Suite - 4th Floor

- * This open floor is available for development.
- * view : Downtown
- * Ensuite washroom(s)
- * Open space
- * Server room
- * 23678 sf



Vacant leasable space in base building condition.

Floor square footage: 23678

FOR LEASE

Henry Hunag wing - Holy Cross Center

2204 2nd Street SW



For more information, please contact :

DALE COUPRIE

Senior Leasing Agent

Cell : (403) 852 4448 Fax : (403) 228 4439

dcouprie@bowriverleasing.com

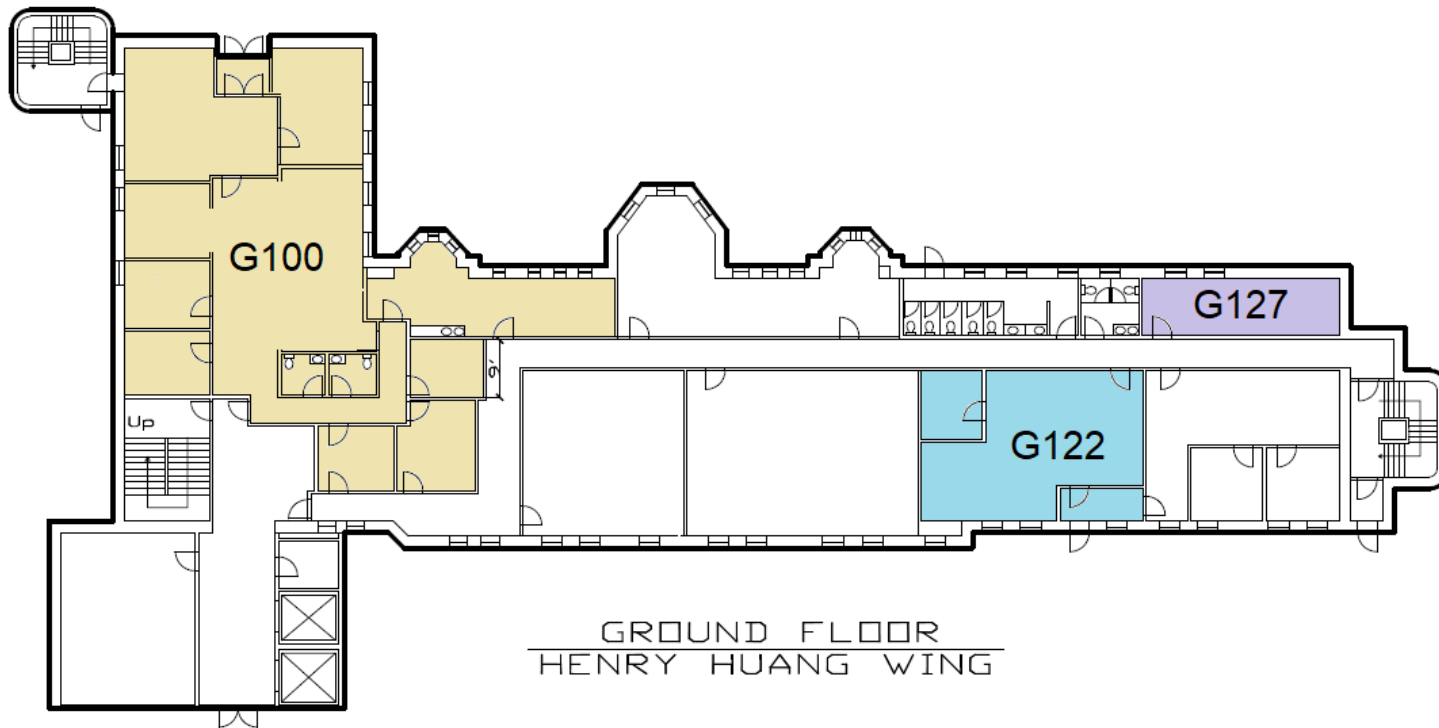
BOW RIVER PROPERTY MANAGEMENT AND LEASING

B250 2210, 2nd Street, SW
Calgary, AB. T2S 3C3

<http://bowriverleasing.com>

Ground Floor

2204 Henry Huang wing - Holy Cross Center
2204 2nd Street SW



HIGHLIGHTS

Suite - G100

- * Improvements in near mint condition.
- * Front entrance off of 2nd Street.
- * Terrific reception and wait area.
- * Character windows and views.
- * 11 rooms
- * view : Road
- * Board room
- * Storage
- * Reception area
- * Ensuite washroom(s)
- * Kitchen area
- * Sink(s)
- * Telephone hub
- * Data hub
- * 4244 sf

Suite - G122

- * Need a good open room. We have this one for you. Ask us about it today.
- * view : Road
- * Kitchen area
- * 1338 sf

Floor 1

2204 Henry Hunag wing - Holy Cross Center
2204 2nd Street SW

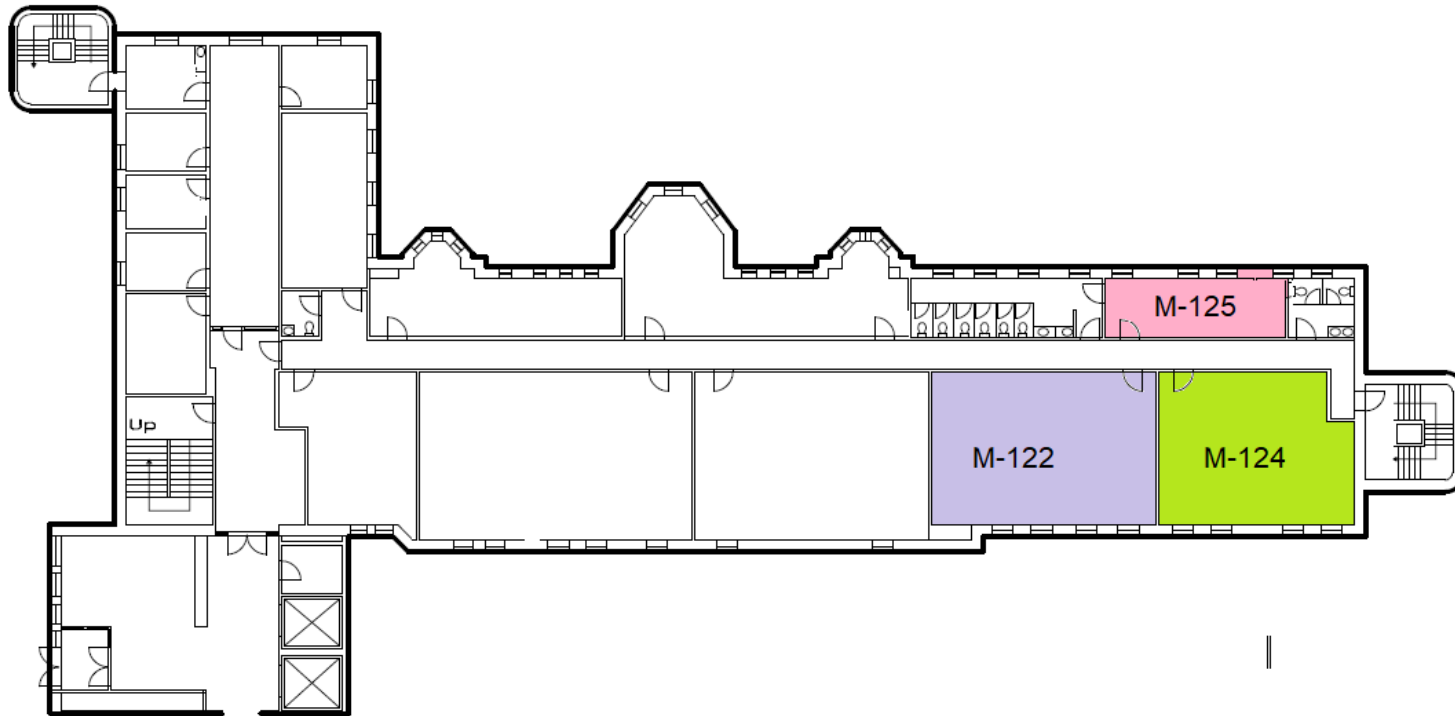
HIGHLIGHTS

Suite - M-124

- * Open space
- * 1325 sf

Suite - M125

- * 334 sf



Floor 2

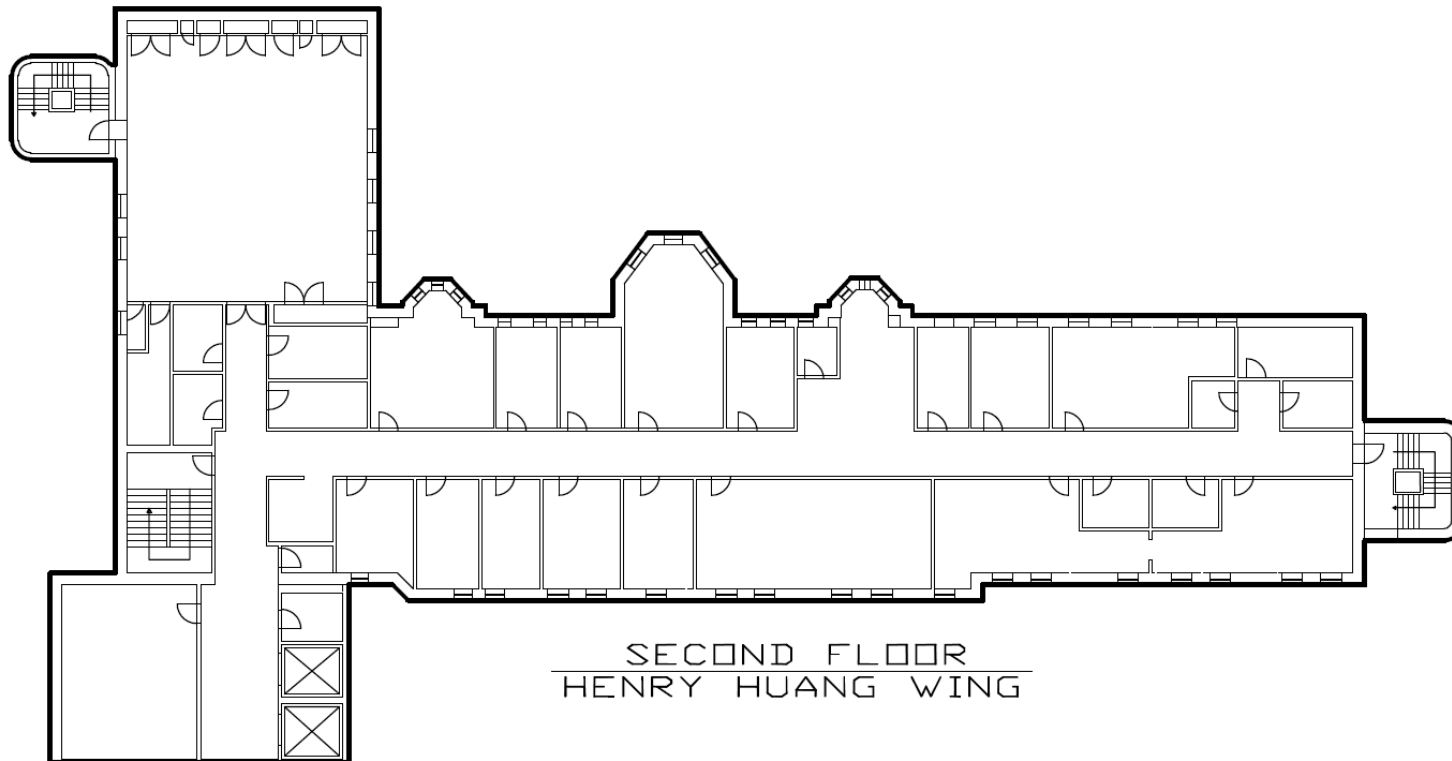
2204 Henry Hunag wing - Holy Cross Center
2204 2nd Street SW

12,000 SF

HIGHLIGHTS

Suite - 200

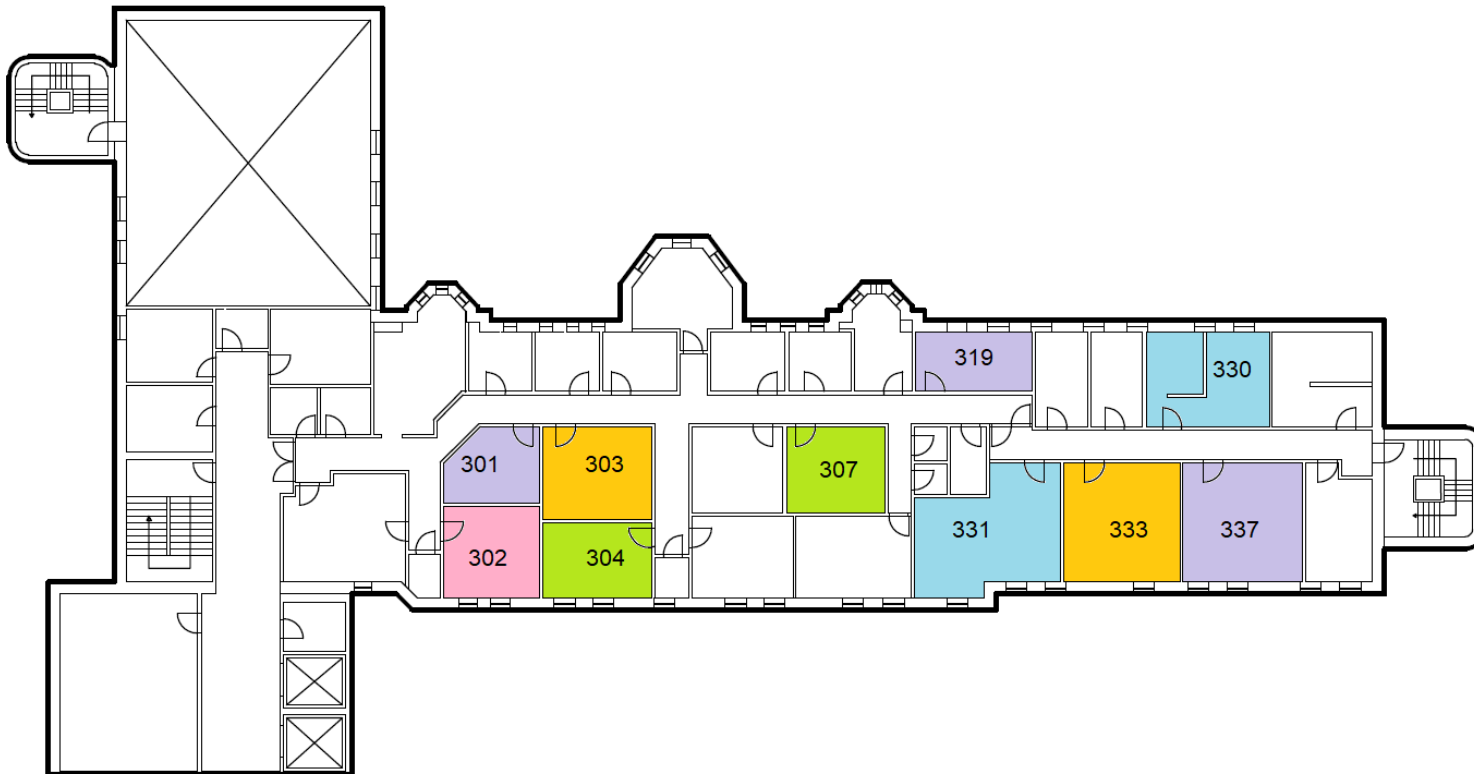
- * 18 rooms
- * Board room
- * Storage
- * Reception area
- * Ensuite washroom(s)
- * Kitchen area
- * Sink(s)
- * Telephone hub
- * Data hub
- * 12000 sf



Floor 3

2204 Henry Hunag wing - Holy Cross Center
2204 2nd Street SW

1,500 SF



HIGHLIGHTS

Suite - 330

- * 2 rooms
- * Sink(s)
- * Open space
- * 440 sf

Suite - 337

- * 537 sf

Suite - 333

- * 541 sf

Suite - 331

- * view : River
- * 636 sf

Suite - 304

- * view : River
- * 286 sf

Suite - 324

- * A perfect single-person office featuring two windows.
- * view : Road
- * 221 sf

Suite - 319

- * Enjoy this city view office with lots of natural light and newer LED lights. Also includes a vinyl plank flooring.
- *

view : Road
* 286 sf