

FOR LEASE

Asia Pacific Centre

100 Fourth Avenue SW Calgary



For more information, please contact :

DALE COUPRIE

Senior Leasing Agent

Cell : (403) 852 4448 Fax : (403) 228 4439

dcouprie@bowriverleasing.com

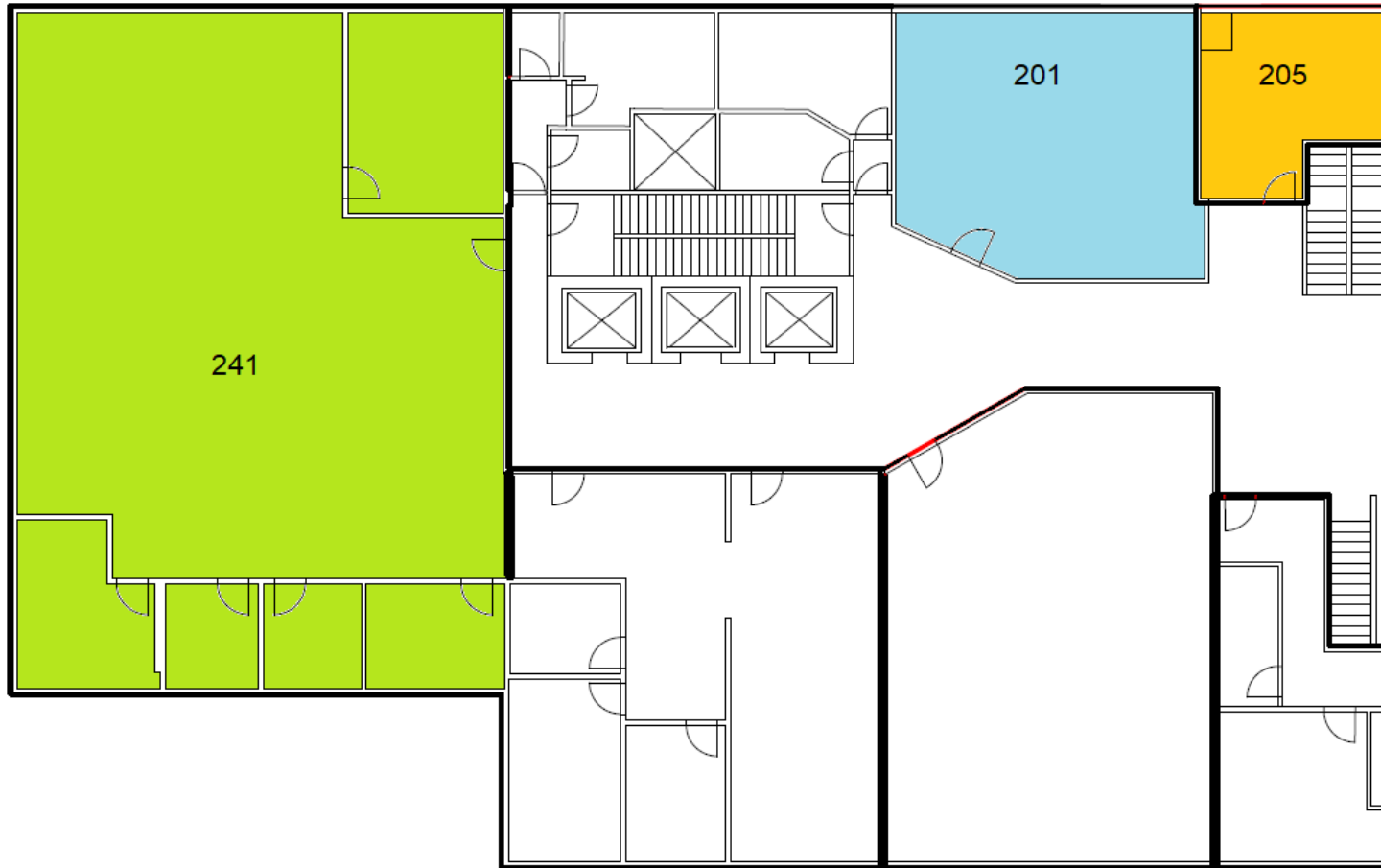
BOW RIVER PROPERTY MANAGEMENT AND LEASING

B250 2210, 2nd Street, SW
Calgary, AB. T2S 3C3

<http://bowriverleasing.com>

Floor 2

Asia Pacific Center
100 4 Avenue SW



HIGHLIGHTS

Suite - 201

- * 1000 sf

Suite - 241

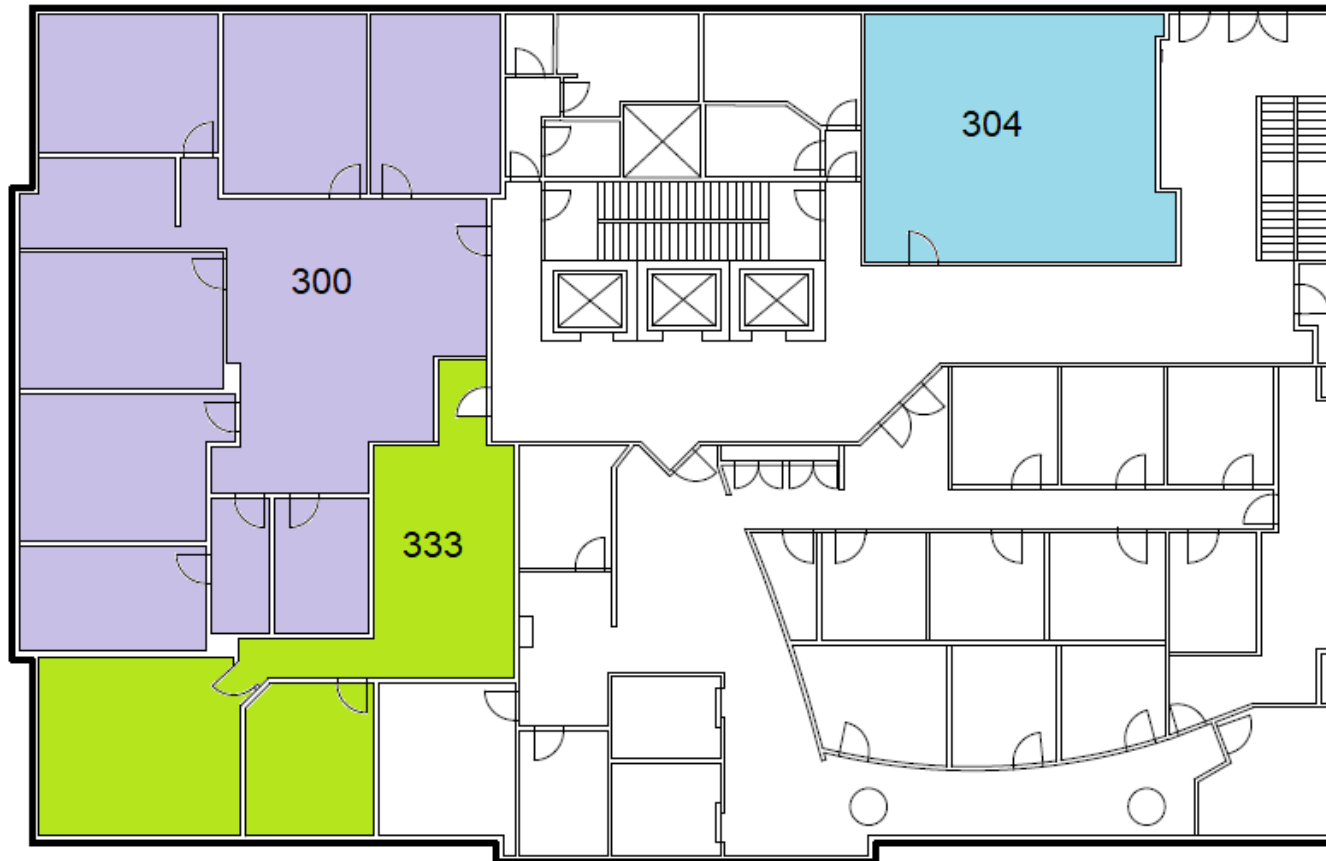
- * 6 rooms
- * view : Downtown
- * 3885 sf

Suite - 205

- * 2 rooms
- * 315 sf

Floor 3

Asia Pacific Center
100 4 Avenue SW



HIGHLIGHTS

Suite - 300

- * 10 rooms
- * view : Downtown
- * 4437 sf

Suite - 333

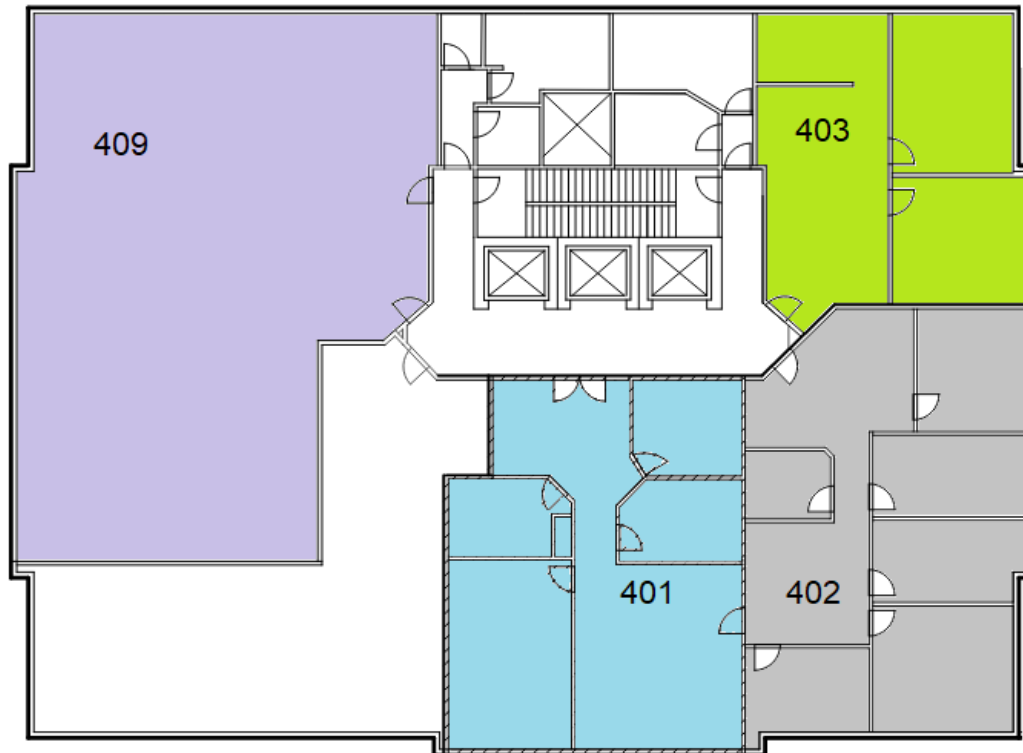
- * 3 rooms
- * view : Downtown
- * 1331 sf

Suite - 304

- * 940 sf

Floor 4

Asia Pacific Center
100 4 Avenue SW



HIGHLIGHTS

Suite - 403

- * 4 rooms
- * 1390 sf

Suite - 409

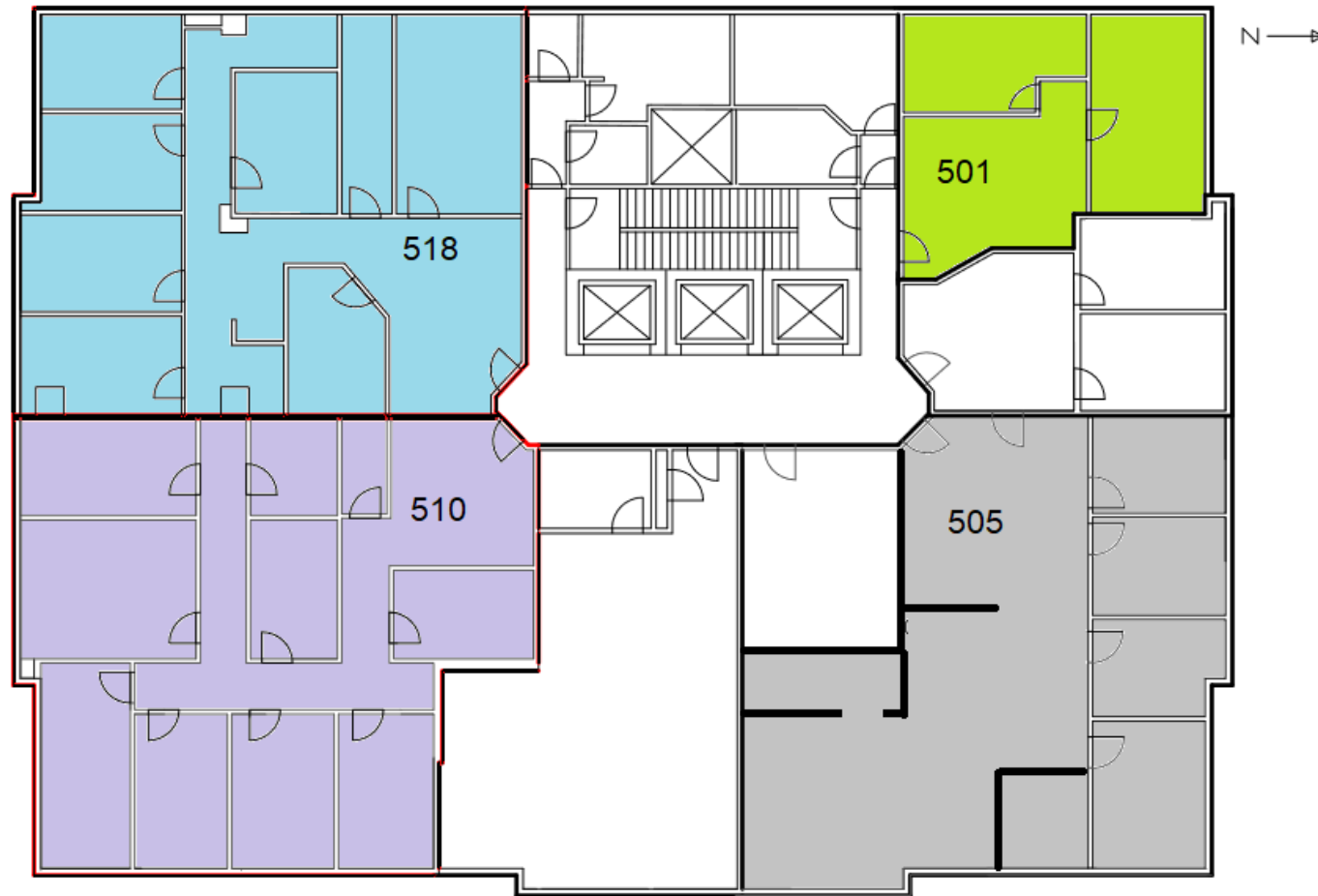
- * 10 rooms
- * view : Road
- * 3519 sf

Suite - 402

- * 7 rooms
- * 1825 sf

Floor 5

Asia Pacific Center
100 4 Avenue SW



HIGHLIGHTS

Suite - 501

- * 3 rooms
- * 875 sf

Suite - 505

- * 2626 sf

Suite - 510

- * 9 rooms
- * 2533 sf

Suite - 518

- * Board room
- * Storage
- * Reception area
- * Kitchen area
- * Sink(s)
- * Server room
- * Telephone hub
- * Data hub
- * Furniture available
- * 2473 sf

Floor 6

Asia Pacific Center
100 4 Avenue SW



HIGHLIGHTS

Suite - 600

- * 11 rooms
- * Board room
- * Storage
- * Reception area
- * Kitchen area
- * Sink(s)
- * Open space
- * Server room
- * Telephone hub
- * Data hub
- * 4832 sf

Suite - 601

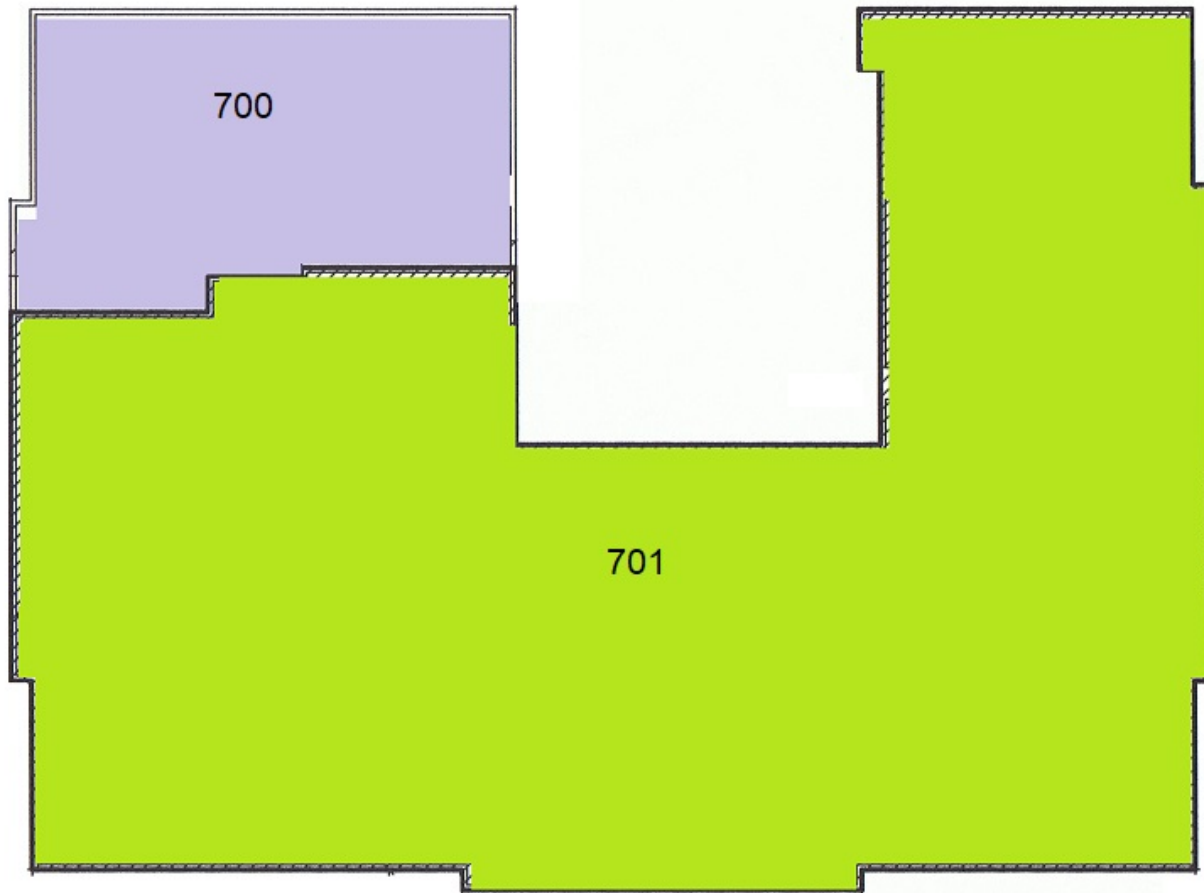
- * 13 rooms
- * Board room
- * Reception area
- * Kitchen area
- * Sink(s)
- * Server room
- * Data hub
- * 3431 sf

Suite - 603

- * 8 rooms
- * Board room
- * Storage
- * Reception area
- * Kitchen area
- * Sink(s)
- * Data hub
- * 2209 sf

Floor 7

Asia Pacific Center
100 4 Avenue SW



HIGHLIGHTS

Suite - 701

- * This is an office intensive configuration with a total of 23 offices. The place also features a boardroom, kitchen and a hybrid reception/hub area.
- * The space has infrastructure and wiring for a tenant-installed security and access control system with smart key readers at each entrance.
- * 27 rooms
- * view : Downtown
- * Board room
- * Storage
- * Reception area
- * Kitchen area
- * Sink(s)
- * Server room
- * Telephone hub
- * Data hub
- * Furniture available
- * 8605 sf

Suite - 700

- * This wonderful space features hardwood floors, an open office area, an office, storage, and much more. Add about 100 square feet and get a shower and bike vestibule.
- * 4 rooms
- * view : Downtown
- * Storage
- * Server room
- * Data hub
- * 1578 sf

Floor 9

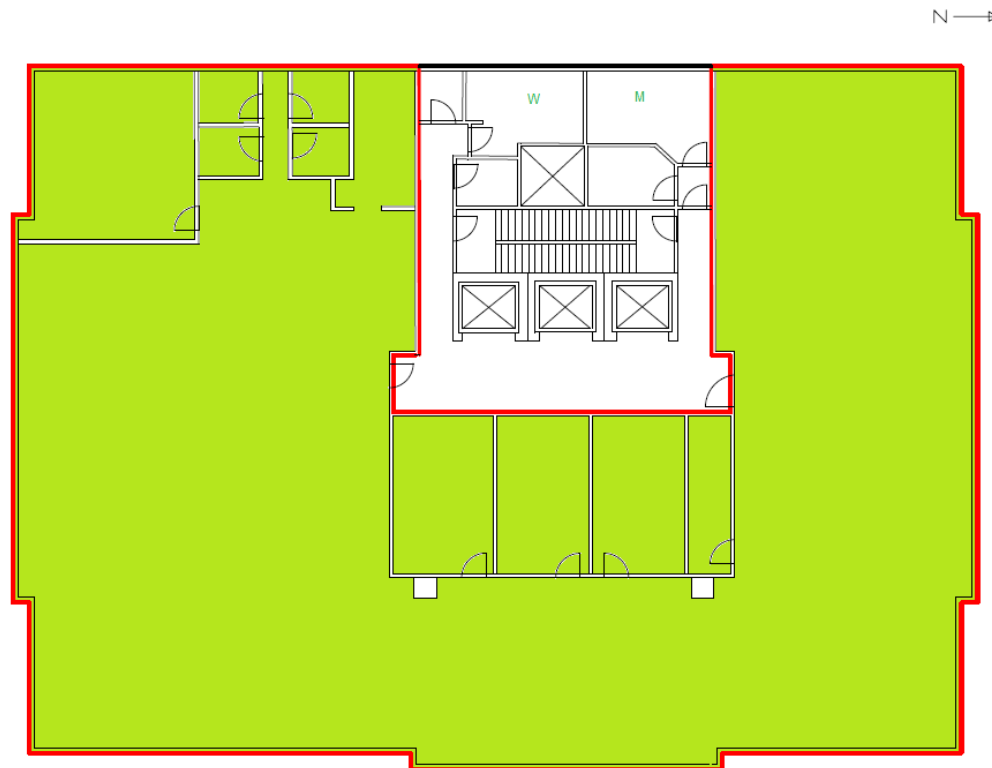
Asia Pacific Center
100 4 Avenue SW

10,285 SF

HIGHLIGHTS

Suite - 900

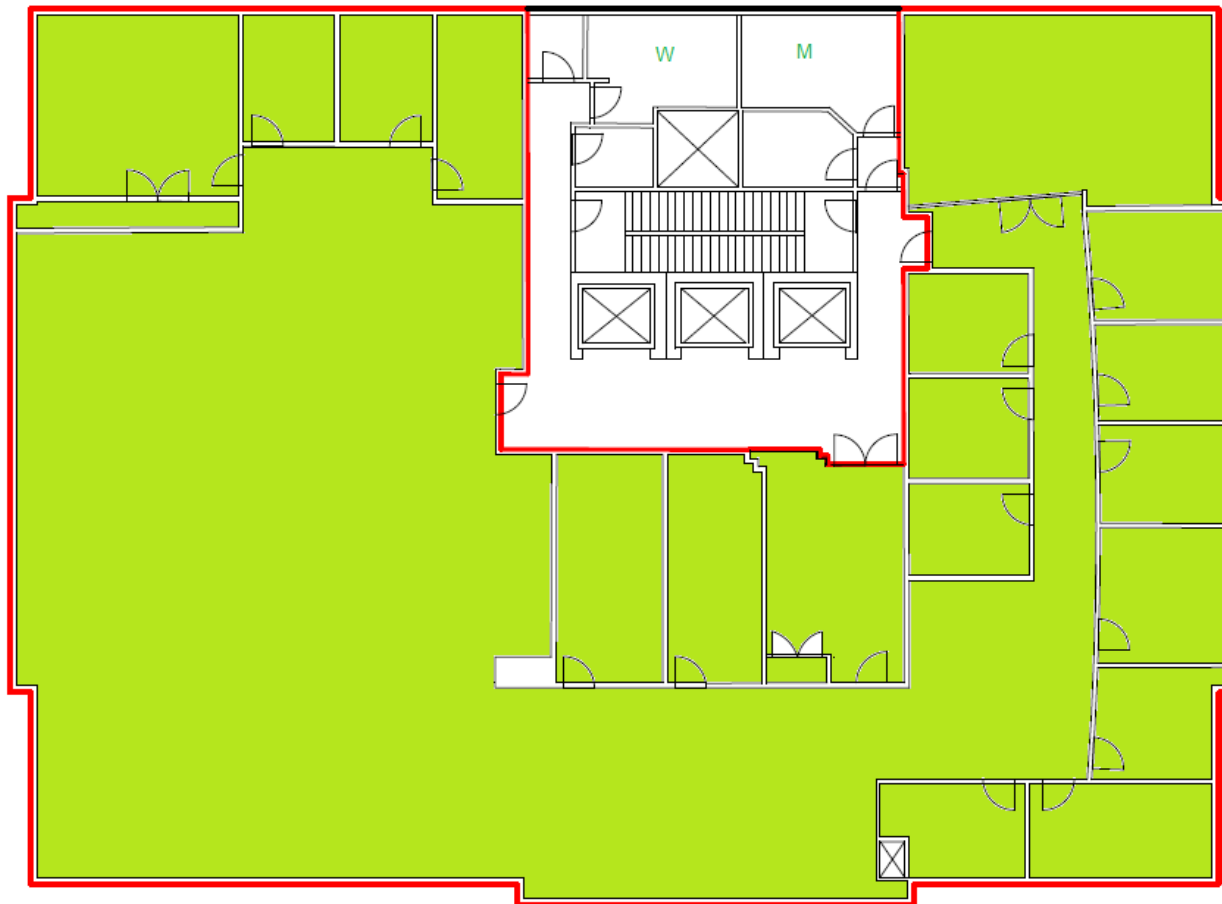
- * Take your business to the next level with this open space. It comes equipped with a boardroom, several breakout rooms, and up to 96 cubicles of workspace.
- * The space also includes a boardroom and four individual breakout rooms.
- * The server rooms are equipped with dedicated air conditioning.
- * Available concurrently with 10th floor for approximately 20,600 square feet.
- * Furniture is available including cubicles, file cabinets and boardroom tables.
- * 10 rooms
- * view : Downtown
- * Board room
- * Ensuite shower room(s)
- * Sink(s)
- * Server room
- * Telephone hub
- * Data hub
- * 10285 sf



Floor 10

Asia Pacific Center
100 4 Avenue SW

10,285 SF



HIGHLIGHTS

Suite - 1000

- * Take your business to the next level with this floor layout. The space includes 10 offices and cubicle space for approximately 48 workers. The reception area includes a glass door entrance.
- * Secure your work with the existing Lenel card access system or choose to integrate with the existing building system.
- * The server room includes infrastructure to install a water-based cooling solution.
- * Telephones and a telephone switch are available.
- * The north offices include a partial river view and a view of the Center Street Bridge.
- * This space is available concurrently with the 9th floor for 20,600 square feet.
- * 17 rooms
- * view : Downtown
- * Board room
- * Storage
- * Reception area
- * Kitchen area
- * Sink(s)
- * Open space
- * Server room
- * Telephone hub
- * Data hub
- * Furniture available
- * 10251 sf