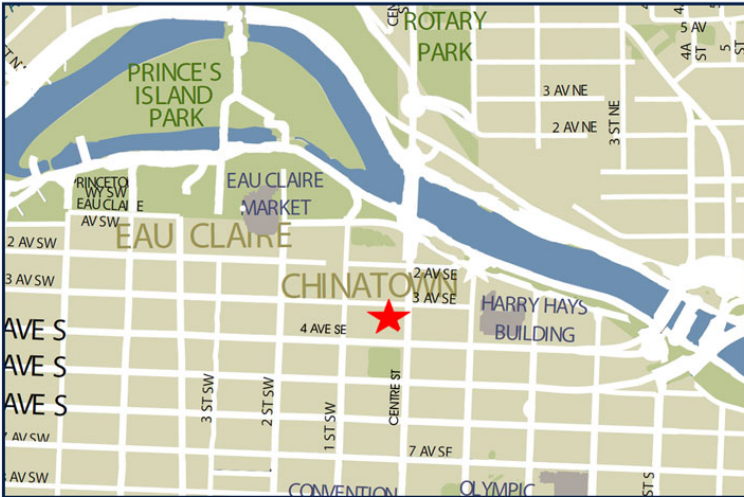


FOR LEASE

ASIA PACIFIC CENTRE OFFICE LEASING OPPORTUNITY



PROPERTY FACTS

ADDRESS	100 4th Street SW
MARKET	Calgary, Alberta
TOTAL BUILDING SIZE	87,687 SF
NUMBER OF FLOORS	10
PARKING	Underground and street

For more information, please contact :

DALE COUPRIE

Senior Leasing Agent

Cell : (403) 852 4448 Fax : (403) 228 4439

dcouprie@bowriverleasing.com

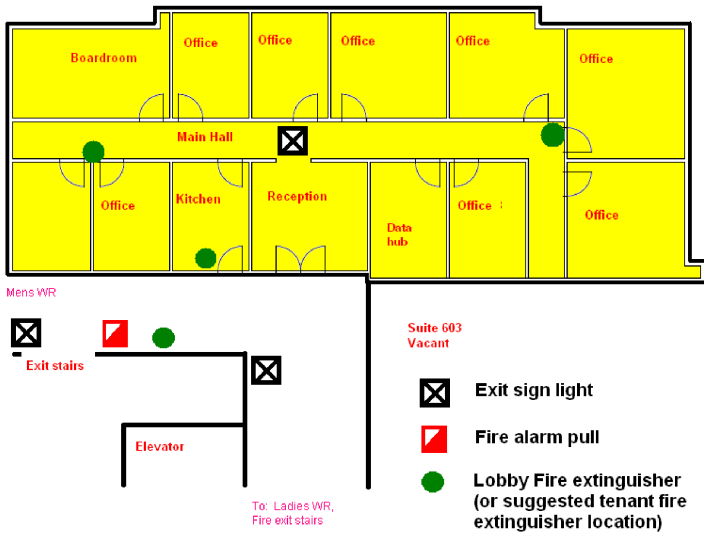
BOW RIVER PROPERTY MANAGEMENT AND LEASING

B250 2210, 2nd Street, SW

Calgary, AB. T2S 3C3

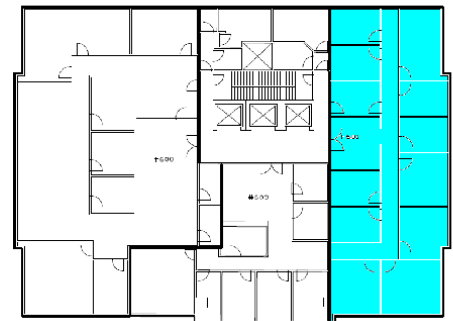
<http://bowriverleasing.com>

FOR LEASE
ASIA PACIFIC CENTRE
OFFICE LEASING OPPORTUNITY



SUITE COMMENTS

- * This suite features a reception area, kitchen, and 11 office-type rooms of various sizes. More than one room in this suite could be configured as a boardroom.
- * Neat coloring.
- * The space features one room configured as a data hub. It is ready for a server environment.
- * 13 rooms
- * view : River
- * Board room
- * Reception area
- * Kitchen area
- * Sink(s)
- * Server room
- * Data hub
- * 3431 sf
- * 6 Floor



KEY PLAN

For more information, please contact :

DALE COUPRIE

Senior Leasing Agent

Cell : (403) 852 4448 Fax : (403) 228 4439

dcoupr@bowriverleasing.com

BOW RIVER PROPERTY MANAGEMENT AND LEASING

B250 2210, 2nd Street, SW

Calgary, AB. T2S 3C3

<http://bowriverleasing.com>