

# FOR LEASE

## ASIA PACIFIC CENTRE OFFICE LEASING OPPORTUNITY



### PROPERTY FACTS

ADDRESS	100 4th Street SW
MARKET	Calgary, Alberta
TOTAL BUILDING SIZE	87,687 SF
NUMBER OF FLOORS	10
PARKING	Underground and street

For more information, please contact :

**DALE COUPRIE**

Senior Leasing Agent

Cell : (403) 852 4448 Fax : (403) 228 4439

[dcouprie@bowriverleasing.com](mailto:dcouprie@bowriverleasing.com)

BOW RIVER PROPERTY MANAGEMENT AND LEASING

B250 2210, 2nd Street, SW

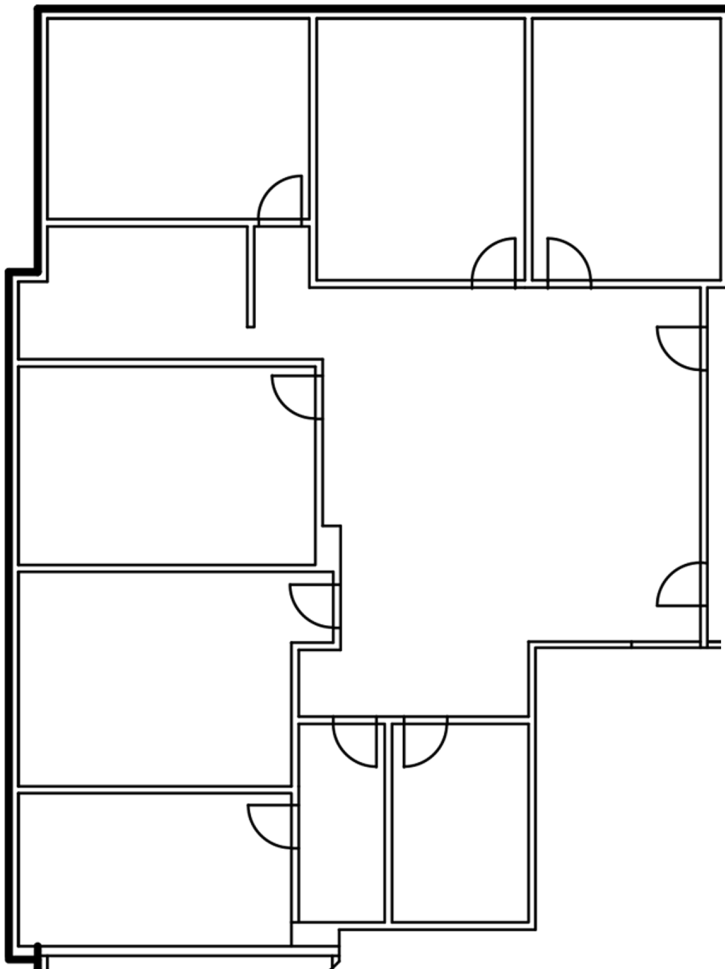
Calgary, AB. T2S 3C3

<http://bowriverleasing.com>

300

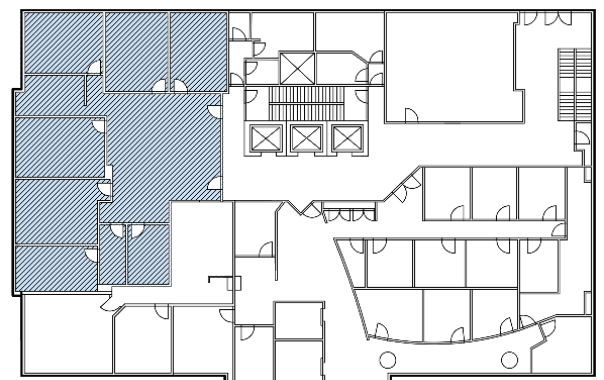
100 4 Avenue SW, Calgary AB

**FOR LEASE**  
ASIA PACIFIC CENTRE  
OFFICE LEASING OPPORTUNITY



### SUITE COMMENTS

- \* This suite features many options.
- \* Non-porous floor tiles throughout the space.
- \* Use the existing rooms or configure the space to your needs.
- \* The south view gives you a look at James Short as well as Suncor and The Bow.
- \* 10 rooms
- \* view : Downtown
- \* Board room
- \* Reception area
- \* Sink(s)
- \* 4437 sf
- \* 3 Floor



KEY PLAN

For more information, please contact :

**DALE COUPRIE**

Senior Leasing Agent

Cell : (403) 852 4448 Fax : (403) 228 4439

[dcoupric@bowriverleasing.com](mailto:dcoupric@bowriverleasing.com)

BOW RIVER PROPERTY MANAGEMENT AND LEASING

B250 2210, 2nd Street, SW

Calgary, AB. T2S 3C3

<http://bowriverleasing.com>