

# FOR LEASE

## ASIA PACIFIC CENTRE OFFICE LEASING OPPORTUNITY



### PROPERTY FACTS

ADDRESS	100 4th Street SW
MARKET	Calgary, Alberta
TOTAL BUILDING SIZE	87,687 SF
NUMBER OF FLOORS	10
PARKING	Underground and street

For more information, please contact :

**DALE COUPRIE**

Senior Leasing Agent

Cell : (403) 852 4448 Fax : (403) 228 4439

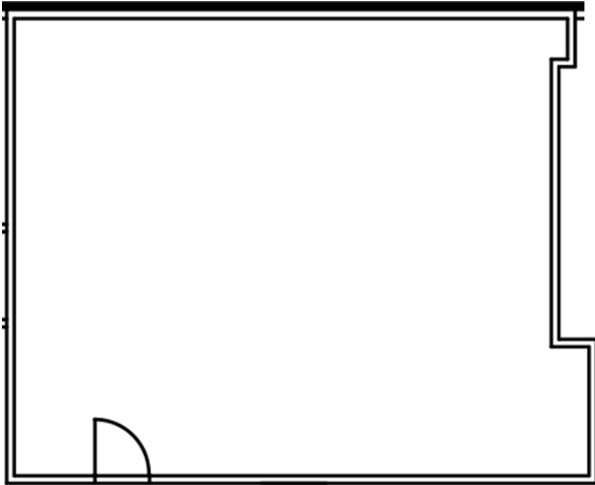
[dcoutrie@bowriverleasing.com](mailto:dcoutrie@bowriverleasing.com)

BOW RIVER PROPERTY MANAGEMENT AND LEASING

B250 2210, 2nd Street, SW

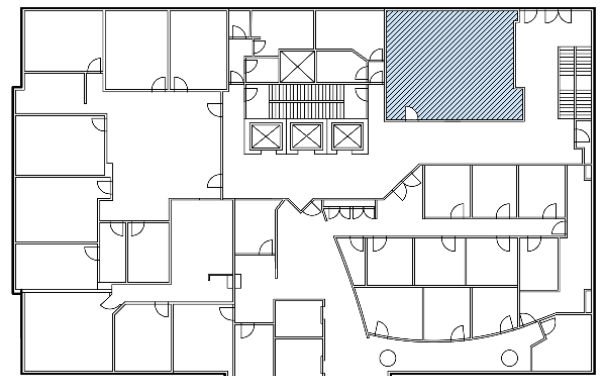
Calgary, AB. T2S 3C3

<http://bowriverleasing.com>



### SUITE COMMENTS

- \* Open concept
- \* Windows facing Plus 15 vestibule
- \* Corner Sink
- \* Newly renovated common area
- \* Sink(s)
- \* Open space
- \* 940 sf
- \* 3 Floor



KEY PLAN

For more information, please contact :

**DALE COUPRIE**

*Senior Leasing Agent*

Cell : (403) 852 4448 Fax : (403) 228 4439

[dcouprie@bowriverleasing.com](mailto:dcouprie@bowriverleasing.com)

**BOW RIVER PROPERTY MANAGEMENT AND LEASING**

B250 2210, 2nd Street, SW

Calgary, AB. T2S 3C3

<http://bowriverleasing.com>