

FOR LEASE

ASIA PACIFIC CENTRE OFFICE LEASING OPPORTUNITY



PROPERTY FACTS

ADDRESS	100 4th Street SW
MARKET	Calgary, Alberta
TOTAL BUILDING SIZE	87,687 SF
NUMBER OF FLOORS	10
PARKING	Underground and street

For more information, please contact :

DALE COUPRIE

Senior Leasing Agent

Cell : (403) 852 4448 Fax : (403) 228 4439

dcouprie@bowriverleasing.com

BOW RIVER PROPERTY MANAGEMENT AND LEASING

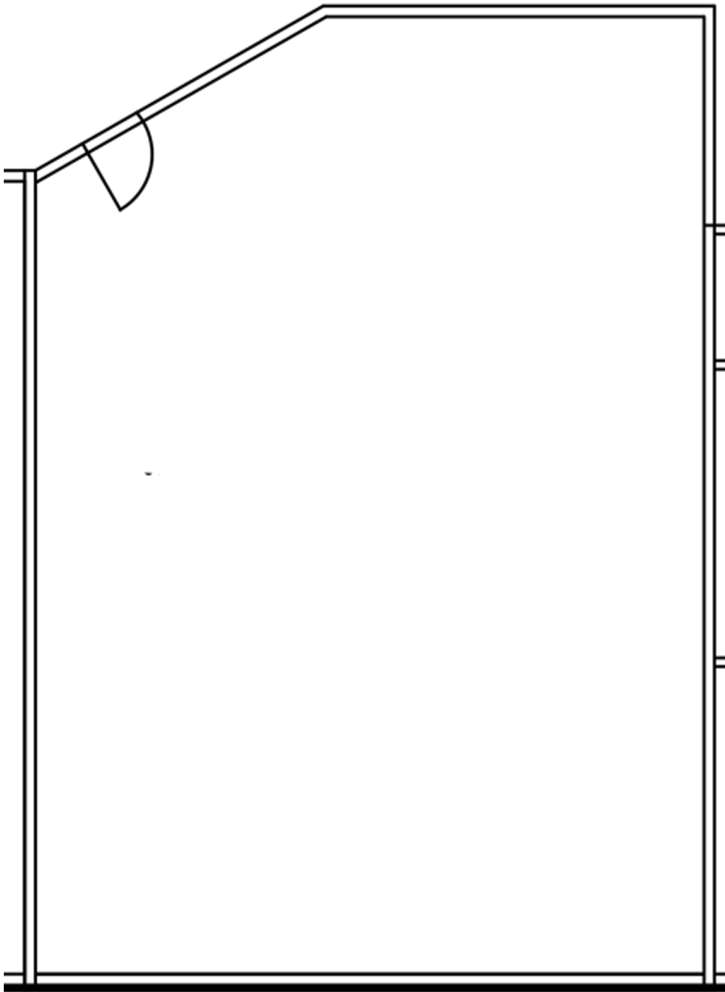
B250 2210, 2nd Street, SW

Calgary, AB. T2S 3C3

<http://bowriverleasing.com>

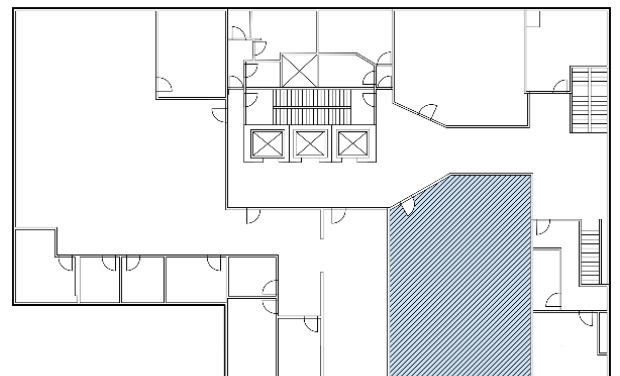
FOR LEASE

ASIA PACIFIC CENTRE OFFICE LEASING OPPORTUNITY



SUITE COMMENTS

- * An open space, use your imagination in designing this neat space. Ideal for work, office, retail, fitness and more.
- * The space features new carpet tile and paint.
- * view : Downtown
- * Open space
- * Telephone hub
- * Data hub
- * 1661 sf
- * 2 Floor



KEY PLAN

For more information, please contact :

DALE COUPRIE

Senior Leasing Agent

Cell : (403) 852 4448 Fax : (403) 228 4439

dcouprie@bowriverleasing.com

BOW RIVER PROPERTY MANAGEMENT AND LEASING

B250 2210, 2nd Street, SW

Calgary, AB. T2S 3C3

<http://bowriverleasing.com>