

FOR LEASE

ASIA PACIFIC CENTRE OFFICE LEASING OPPORTUNITY



PROPERTY FACTS

ADDRESS	100 4th Street SW
MARKET	Calgary, Alberta
TOTAL BUILDING SIZE	87,687 SF
NUMBER OF FLOORS	10
PARKING	Underground and street

For more information, please contact :

DALE COUPRIE

Senior Leasing Agent

Cell : (403) 852 4448 Fax : (403) 228 4439

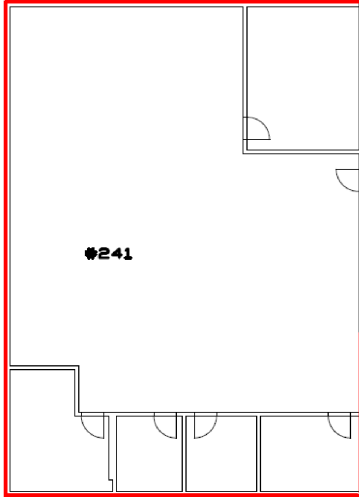
dcouprie@bowriverleasing.com

BOW RIVER PROPERTY MANAGEMENT AND LEASING

B250 2210, 2nd Street, SW

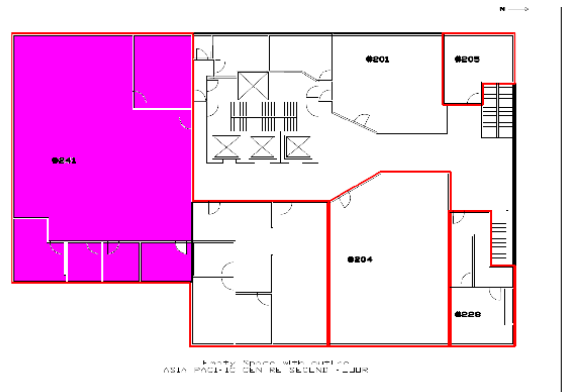
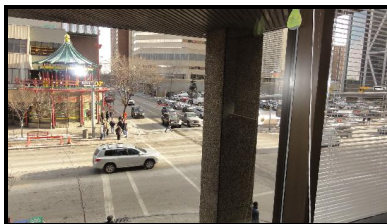
Calgary, AB. T2S 3C3

<http://bowriverleasing.com>



SUITE COMMENTS

- * This suite features an open area. There are also four offices with glass walls along the east side and a kitchen area.
- * Parts for about a dozen cubicles are available.
- * 6 rooms
- * view : Downtown
- * Storage
- * Kitchen area
- * Sink(s)
- * Open space
- * Data hub
- * Furniture available
- * 3885 sf
- * 2 Floor



KEY PLAN

For more information, please contact :

DALE COUPRIE

Senior Leasing Agent

Cell : (403) 852 4448 Fax : (403) 228 4439

dcouprie@bowriverleasing.com

BOW RIVER PROPERTY MANAGEMENT AND LEASING

B250 2210, 2nd Street, SW

Calgary, AB. T2S 3C3

<http://bowriverleasing.com>