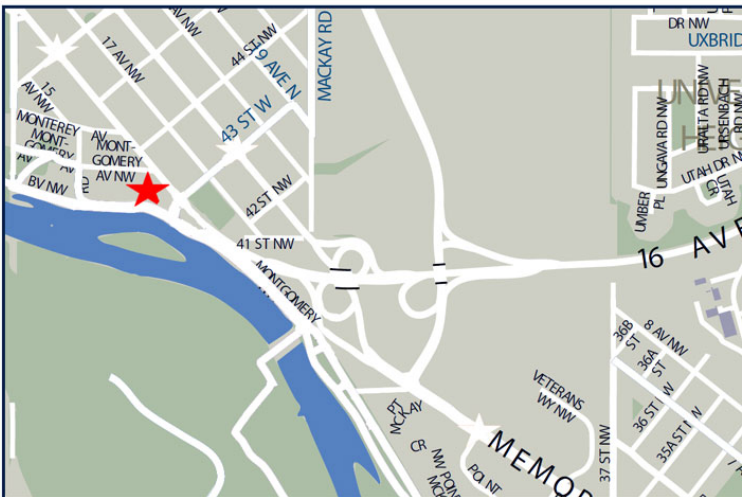


# FOR LEASE

## BOW RIVER PROFESSIONAL CENTRE OFFICE LEASING OPPORTUNITY



### PROPERTY FACTS

ADDRESS	4411 16th Avenue NW
MARKET	Calgary, Alberta
TOTAL BUILDING SIZE	32,071 SF
NUMBER OF FLOORS	3
PARKING	Underground and surface

For more information, please contact :

**DALE COUPRIE**

Senior Leasing Agent

Cell : (403) 852 4448 Fax : (403) 228 4439

[dcouprie@bowriverleasing.com](mailto:dcouprie@bowriverleasing.com)

BOW RIVER PROPERTY MANAGEMENT AND LEASING

B250 2210, 2nd Street, SW

Calgary, AB. T2S 3C3

<http://bowriverleasing.com>

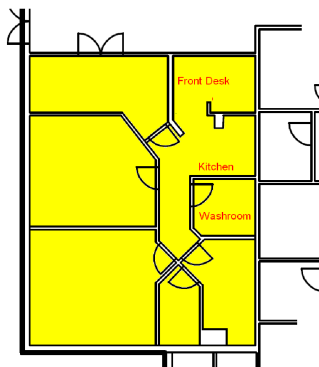
160

4411 16th Avenue NW, Calgary AB

**FOR LEASE**

**BOW RIVER PROFESSIONAL CENTRE  
OFFICE LEASING OPPORTUNITY**

Suite 160  
Bow River Professional  
Center



#### **SUITE COMMENTS**

- \* Storage
- \* Reception area
- \* Ensuite washroom(s)
- \* Kitchen area
- \* Sink(s)
- \* Telephone hub
- \* Data hub
- \* 1448 sf
- \* Main Floor



For more information, please contact :

**DALE COUPRIE**

*Senior Leasing Agent*

Cell : (403) 852 4448 Fax : (403) 228 4439

[dcouprie@bowriverleasing.com](mailto:dcouprie@bowriverleasing.com)

**BOW RIVER PROPERTY MANAGEMENT AND LEASING**

B250 2210, 2nd Street, SW

Calgary, AB. T2S 3C3

<http://bowriverleasing.com>