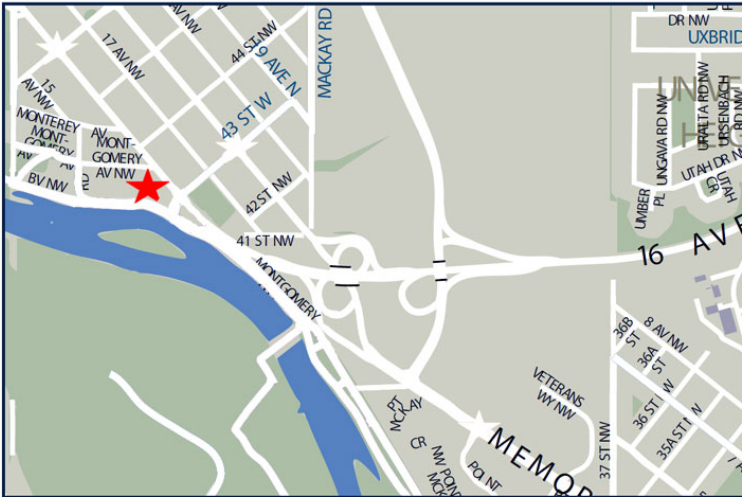


FOR LEASE

BOW RIVER PROFESSIONAL CENTRE OFFICE LEASING OPPORTUNITY



PROPERTY FACTS

ADDRESS	4411 16th Avenue NW
MARKET	Calgary, Alberta
TOTAL BUILDING SIZE	32,071 SF
NUMBER OF FLOORS	3
PARKING	Underground and surface

For more information, please contact :

DALE COUPRIE

Senior Leasing Agent

Cell : (403) 852 4448 Fax : (403) 228 4439

dcouprie@bowriverleasing.com

BOW RIVER PROPERTY MANAGEMENT AND LEASING

B250 2210, 2nd Street, SW
Calgary, AB. T2S 3C3

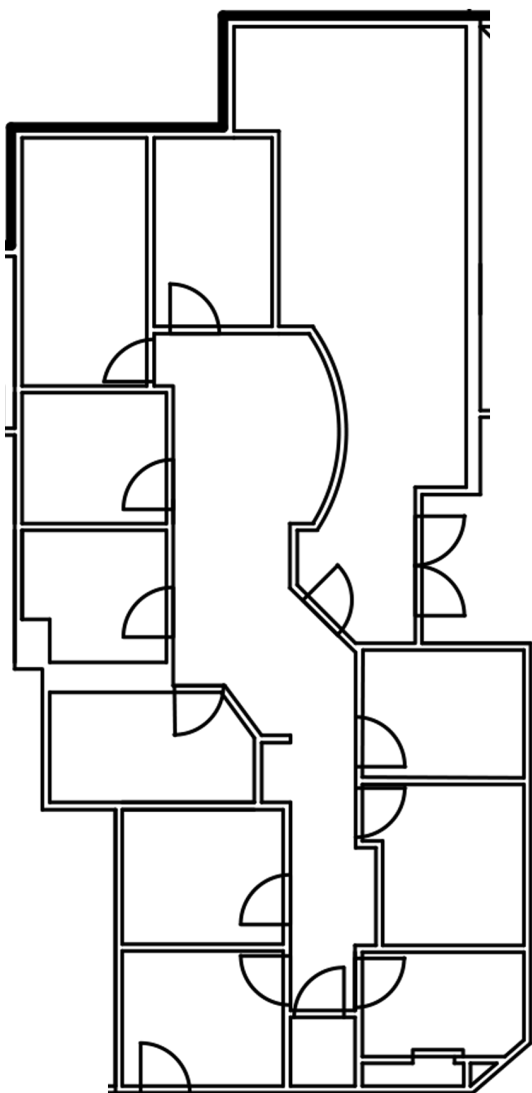
<http://bowriverleasing.com>

228

4411 16th Avenue NW, Calgary AB

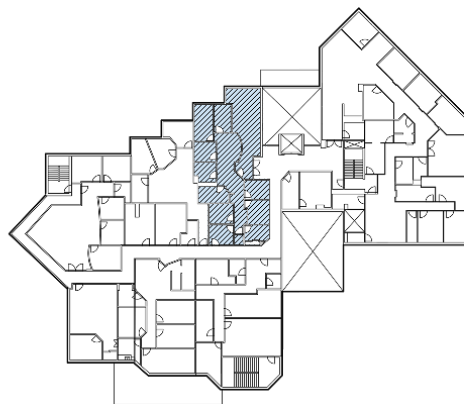
FOR LEASE

**BOW RIVER PROFESSIONAL CENTRE
OFFICE LEASING OPPORTUNITY**



SUITE COMMENTS

- * 9 rooms
- * Storage
- * Reception area
- * Ensuite washroom(s)
- * Kitchen area
- * Sink(s)
- * Data hub
- * 1908 sf
- * 2 Floor



KEY PLAN

For more information, please contact :

DALE COUPRIE

Senior Leasing Agent

Cell : (403) 852 4448 Fax : (403) 228 4439

dcouprie@bowriverleasing.com

BOW RIVER PROPERTY MANAGEMENT AND LEASING

B250 2210, 2nd Street, SW

Calgary, AB. T2S 3C3

<http://bowriverleasing.com>