

FOR LEASE

HOPEWELL CORPORATE CENTRE

2618 Hopewell Place NE Calgary



For more information, please contact :

DALE COUPRIE

Senior Leasing Agent

Cell : (403) 852 4448 Fax : (403) 228 4439

dcouprie@bowriverleasing.com

BOW RIVER PROPERTY MANAGEMENT AND LEASING

*B250 2210, 2nd Street, SW
Calgary, AB. T2S 3C3*

<http://bowriverleasing.com>

Floor 2

Hopewell Corporate Centre
2618 Hopewell Place, NE



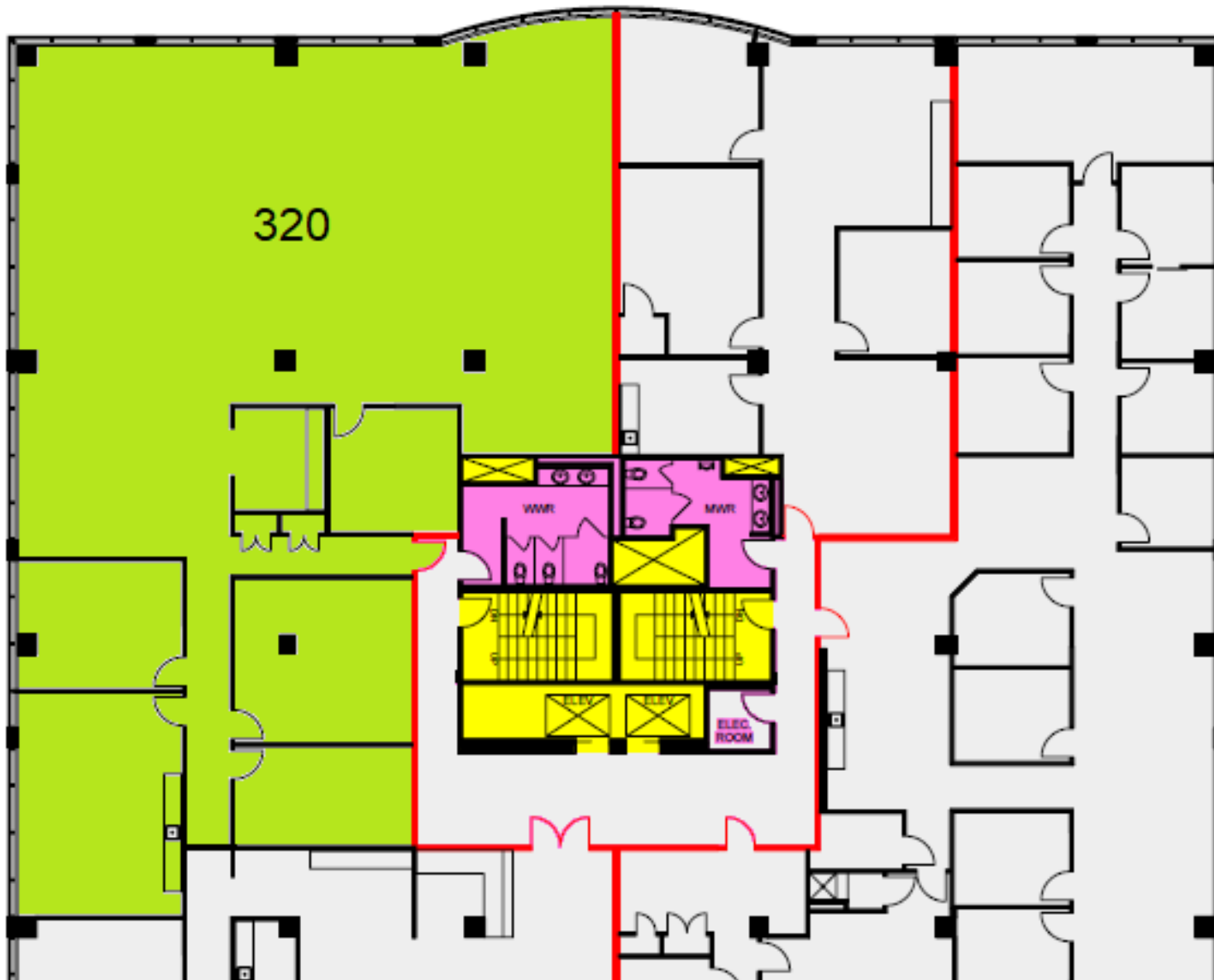
HIGHLIGHTS

Suite - 240

- * This simple space is located right on a prime corner of the city with great views. Includes an open space, boardroom, kitchen and data area.
- * 3 rooms
- * view : Road
- * Board room
- * Storage
- * Reception area
- * Kitchen area
- * Sink(s)
- * Open space
- * Server room
- * Telephone hub
- * Data hub
- * 2098 sf

Floor 3

Hopewell Corporate Centre
2618 Hopewell Place, NE



HIGHLIGHTS

Suite - 320

- * Great for a medium enterprise, this space offers lots of work space and a cooled server room.
- * view : Road
- * Storage
- * Kitchen area
- * Open space
- * Server room
- * Telephone hub
- * Data hub
- * 5200 sf

Floor 5

Hopewell Corporate Centre
2618 Hopewell Place, NE

14,840 SF

HIGHLIGHTS

Suite - 500

- * Take your enterprise to a new level with this amazing floor. Features full smart security, server room, and a wide array of views including downtown, the airport and more.
- * view : Road
- * Board room
- * Reception area
- * Ensuite washroom(s)
- * Ensuite shower room(s)
- * Server room
- * Furniture available
- * 14840 sf

